



County of Stettler No. 6

Box 1270
6602 – 44 Avenue
Stettler, Alberta TOC 2L0
T:403.742.4441 F: 403.742.1277
www.stettlercounty.ca

June 16, 2022

Dear Botha Landowner/Resident,

RE: Proposed Traffic Control Updates for the Hamlet of Botha

The County of Stettler has concluded a study of Botha traffic control including signage, speed limits and truck routes. The study included a review of the County of Stettler General Traffic Bylaw and applicable standards.

Attached please find a copy of the proposed controls for the Hamlet of Botha which include School and Playground zones, Intersection Controls and Truck Routes (no truck routes have been identified for Botha).

Proposed changes in Botha include but are not limited to:

- Redistribution of playground zones to align with Alberta Transportation standards
- Speed limits changes to be aligned with the County of Stettler's General Traffic Bylaw
- Removal of trucking in the Hamlet, only local deliveries allowed
- Clarification of intersection controls in the northwest corner of the hamlet

Council will consider adopting this plan at the July 13, 2022 Regular Council Meeting. Any applicable amendments to the County of Stettler General Traffic Bylaw may be considered as well.

We are asking anyone affected to provide input, questions or concerns about the proposed updates to Botha Traffic Controls by Tuesday, July 5. Please email your questions or concerns to the County of Stettler at info@stettlercounty.ca, or call 403-742-4441 x110 to speak with the engineering department.

We thank you in advance for your feedback.

Sincerely,



**Yvette Cassidy
CAO**

CC

Council for the County of Stettler No. 6

Clearview School Division

Christ King School Board

Stettler Regional Fire Department

Stettler District Ambulance Authority

Stettler RCMP Detachment

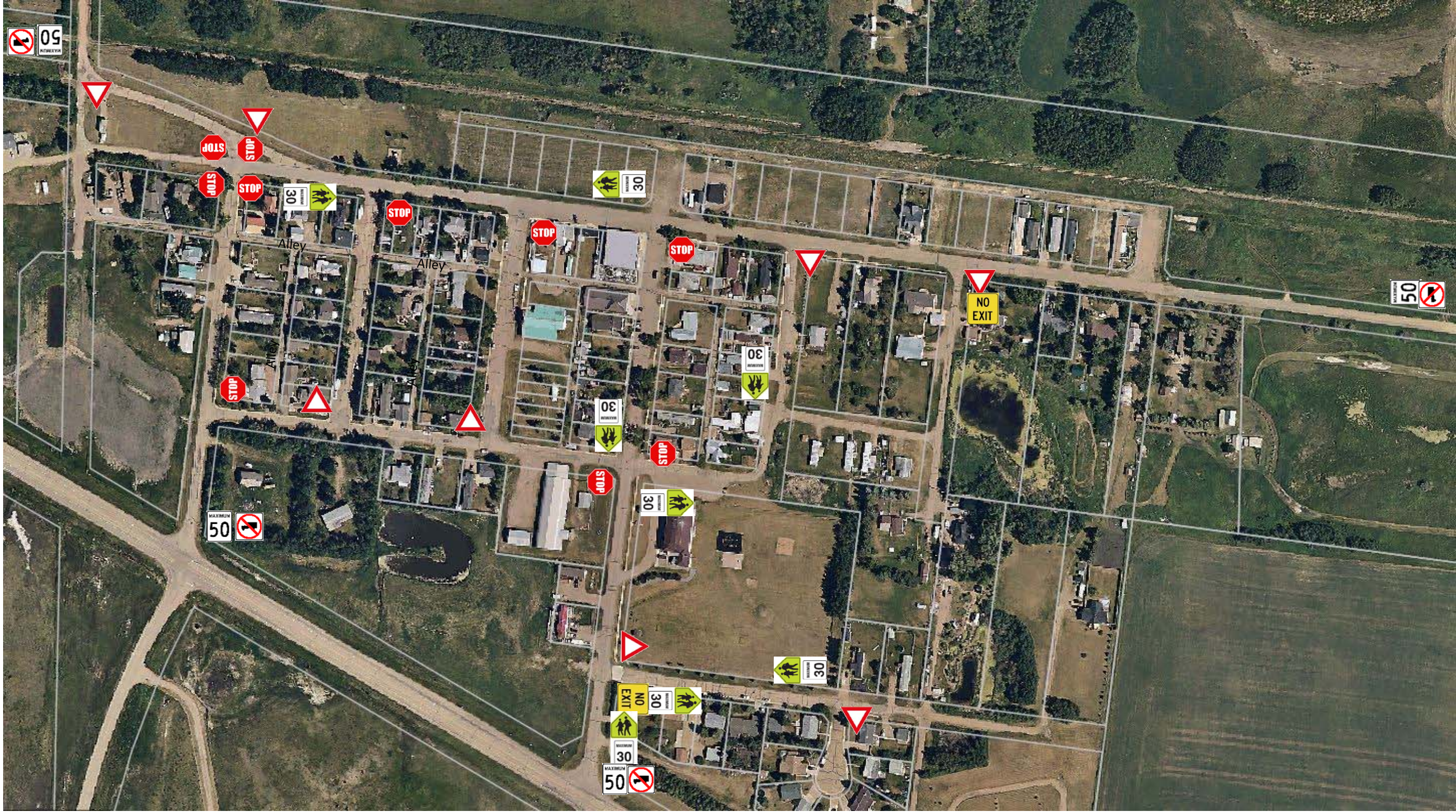
Lone Pine Colony

Hamlet of Botha

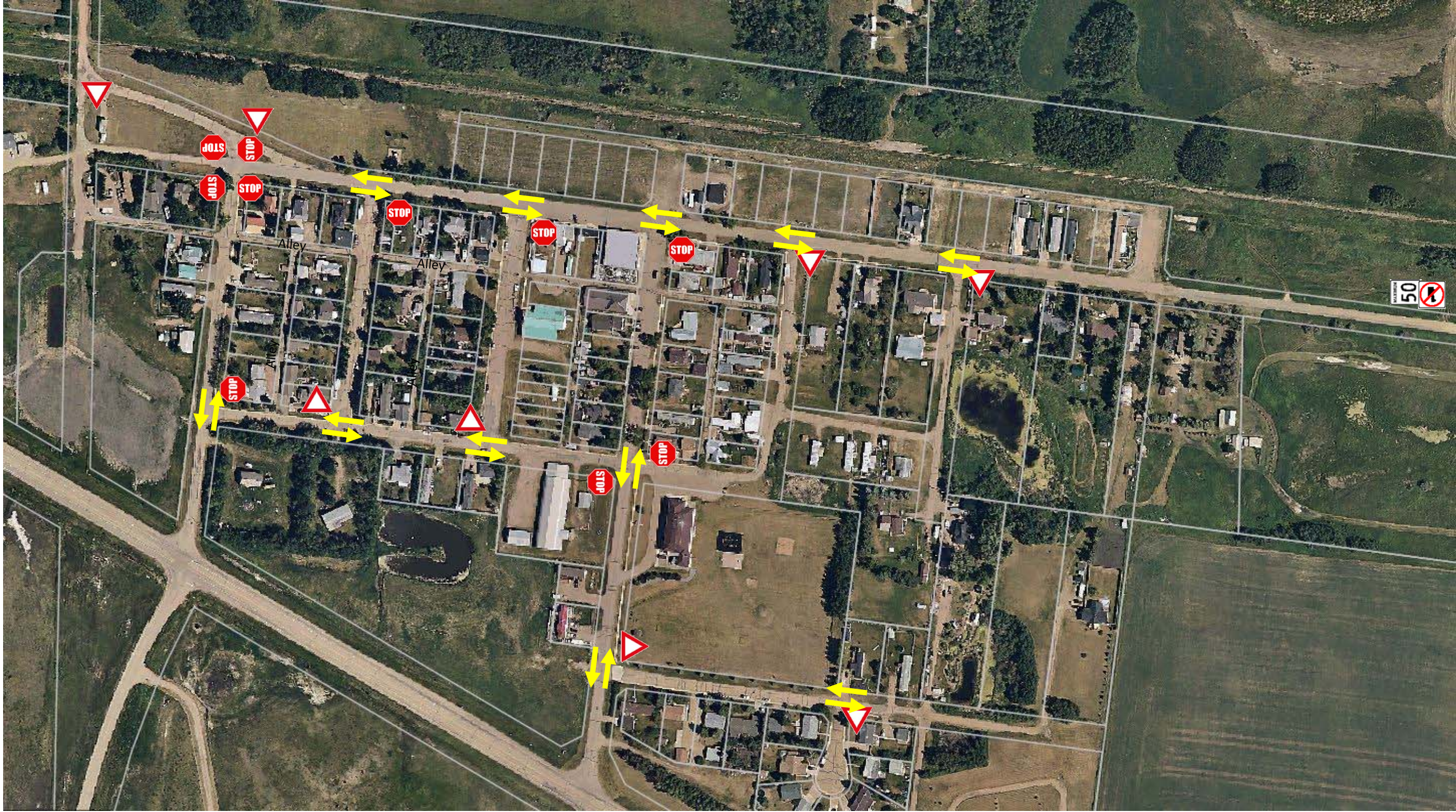
Proposed Updates to Traffic Controls



Botha Traffic Management Plan – Proposed Controls – Overview



Botha Traffic Management Plan – Proposed Controls – Intersection Controls



Botha Traffic Management Plan – Proposed Controls – Intersection Controls NW Detail



Botha Traffic Management Plan – Proposed Controls – Truck Routes (none)



Botha Traffic Management Plan – Proposed Controls – School and Playground Zones

